



**SKEANS**  
engineering and machinery ltd.

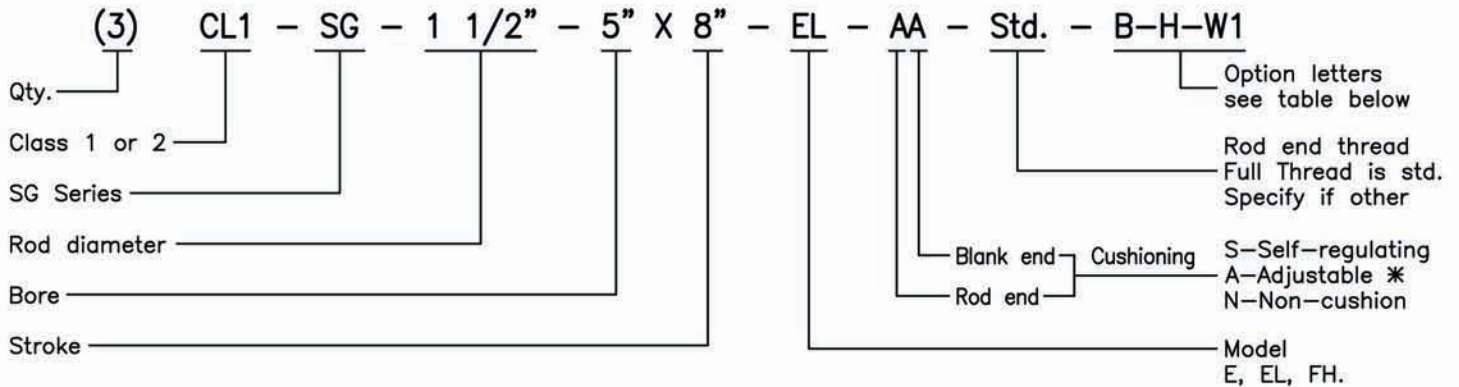


**NOPAK  
SG SERIES  
HEAVY DUTY AIR CYLINDERS**



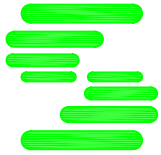
**SKEANS**

**SG SERIES HEAVY DUTY AIR CYLINDER  
ORDERING CODE**



**SG SERIES OPTIONS**

OPTION LETTERS	OPTIONS	BENEFITS
*	Adjustable cushions	Allows for fine adjustment of cushioning effect, at one or both ends.
B	Steel tubing	Smooth I.D. finish, resistant to both wear and corrosion. (STD. from 8"—14" bores)
C	Fiberglass tubing	Light weight, self lubricating, excellent corrosion resistance, low friction.
D	Aluminum tubing	Hard coated I.D., extreme hardness (60RC), excellent wear resistance. (STD. from 2.5" to 6" bore)
E	Extended cushion sleeves	Additional cushioning for higher inertia loads.
F	Tapered cushion sleeves	Less cushion for short stroke / high speed applications, specify which end or both.
G	Stainless steel piston rod	Excellent corrosion resistance.
H	Wrench flats on piston rod	Facilitates removal of rod end accessories.
I	Low temp piston cups	For cold weather applications, suitable for -40 to -50° C
J	Low friction rod seals	Minimal friction for consistent and high speed operation.
K	Rod wiper	Prevents contaminants from entering cylinder & damaging rod end seals.
L	Stop tube/Dual piston ass'y.	Reduces bearing loads in long stroke cylinders, dual piston assembly may be required.
M	Dual/oversize porting	Faster cylinder action, by providing more flow. (Subject to cylinder head limitations)
N	Nitrotec Piston rod or Barrel	Excellent wear / corrosion resistance, please indicate one or both options.
O	Rod boot	Protects piston rod against chips, abrasive particles, and corrosion.
P	Reed proximity switches	Senses location of piston ass'y. Specify quantity/voltage, magnet on the piston is std.
Q	Spherical mounting bracket	Allows for angular misalignment.
R	Spherical rod eye	Reduces pin wear and due to misalignment.
S	(1) Piece rod bushing	Comes with rod wiper and low friction rod seal. ( see photo on page 3 )
T	Corrosion resistant coating	Withstands corrosive environments, coating to be specified, on application.
U	High temperature seals	For temperatures up to 375° F.
V	Water service	Corrosion resistant cylinder built to AWWA standards.
W1	Wear strip piston	One piece solid Alum. piston c/w low friction U-Cups and wear strip for high cycle, side load applications. Dimensionally interchangeable with the std. (3) piece piston.
W2	Extra wide wear strip piston	Three piece piston assembly c/w wider wear strip for severe side load applications.
X	Non-lube service	External lubrication not required, cylinder is pre-lubricated.
Z	Other	Discuss with our design / applications department.



# SKEANS

## SG SERIES HEAVY DUTY AIR CYLINDER

### DESIGN FEATURES

Steel cushion sleeves provide long lasting, dependable, self regulating cushioning, requiring no maintenance or adjustment.

Quick opening ball check-valve assures full power, quick starts.

Time tested, rugged, split v-ring chevron packing for ease of maintenance, with optional low friction seals available.

Durable ductile iron cylinder heads with oversize pins available. (See model EL)

Hard chromed piston rod with optional rod diameters. Stainless steel, and nitrotec also available.

Full diameter rod end thread.

Adjustable cushions available with fine needle adjustment, to regulate cushion effect.

Bolt on gland ring for rugged service, allows for fast and easy replacement of rod seal.

Heavy duty gland assembly provides maximum bearing area for the piston rod. Consists of (2) bronze bushings on either side of the rod seal.

Hard coated aluminum cylinder tubing is standard. Options include steel, nitrotec, and fiberglass tubing.

Standard (3) piece piston assembly for simple cup replacement. The cast iron piston ring provides long wear life. Wear strip pistons also available.

Standard type A piston cups are wear compensating due to long lip length. Other cups are available.

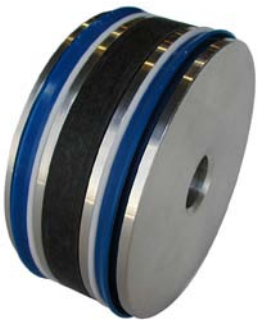
#### RECOMMENDED MAXIMUM PRESSURE RATINGS

Class 1 Air - 150 PSIG  
Class 2 Air - 250 PSIG

#### OPTIONAL PISTONS

OPTION W1

OPTION W2

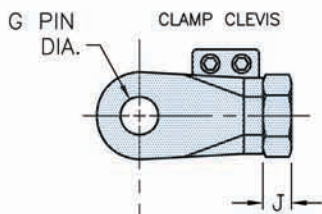


#### OPTIONAL ROD SEAL/BUSHINGS

OPTION J

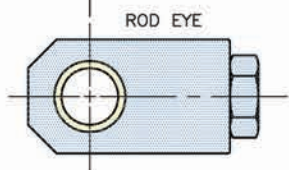
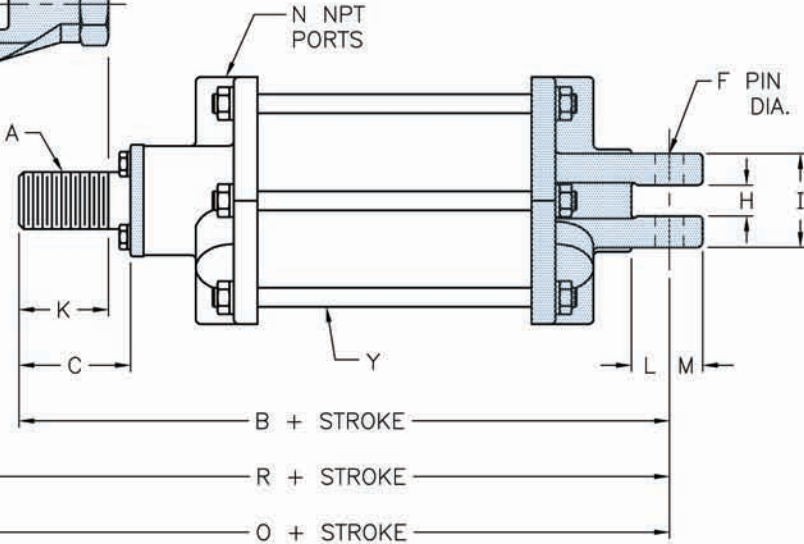
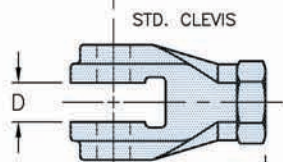
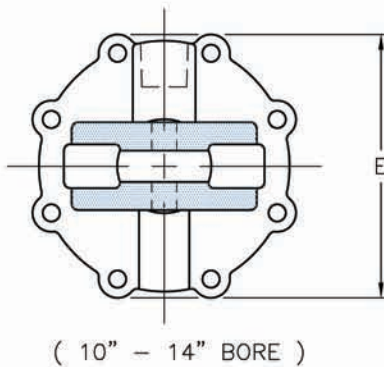
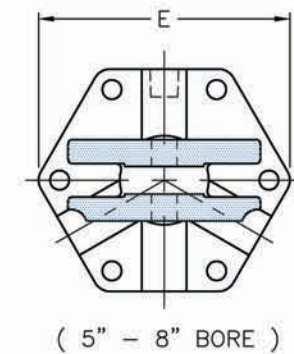
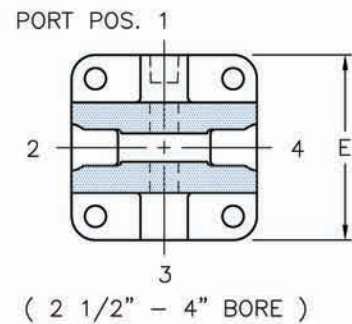
OPTION S





# SKEANS

## STANDARD CLEVIS MOUNT MODEL E

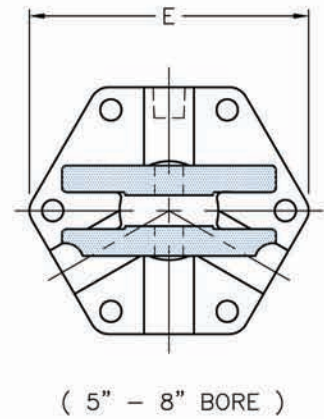
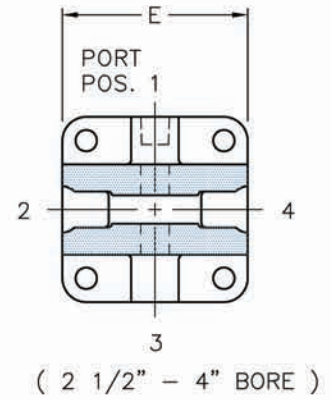
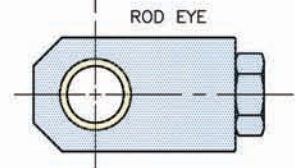
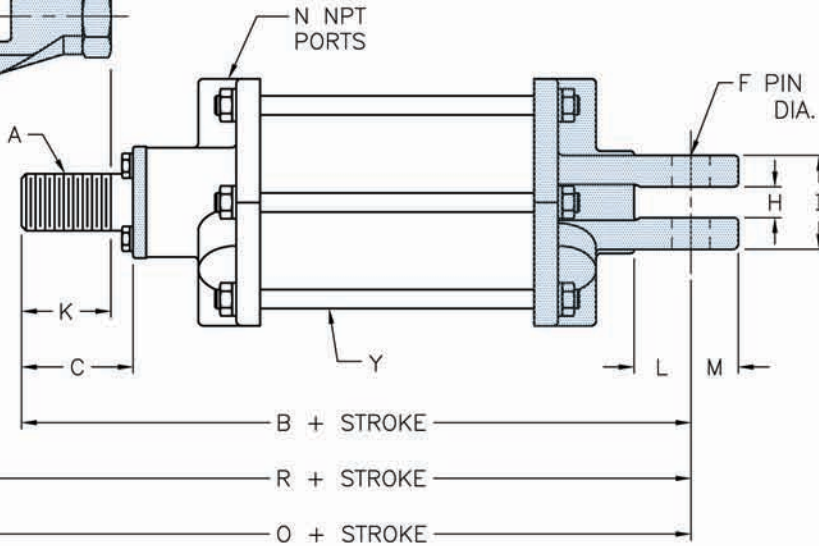
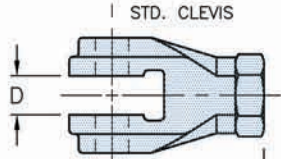
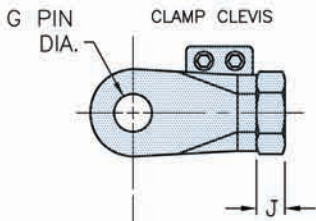


SEE PAGE 7 FOR ACCESSORIES

CYL. BORE	A*	B+	C	D	E	F	G	H	I	J	K	L	M	N	O+	R+	Y*
2 1/2	1-14	9 1/2	2 7/16	25/32	3 9/16	1/2	3/4	1/2	1 5/8	9/16	2	3/4	11/16	3/8	11	10 3/4	4 - 3/8
3	1-14	10	2 1/4	25/32	3 7/8	1/2	3/4	1/2	1 5/8	9/16	2	13/16	11/16	3/8	11 7/16	11 3/16	4 - 3/8
	1 1/4-12	10 13/16	3	1 1/32	3 7/8	1/2	7/8	1/2	1 5/8	3/4	2 5/8	13/16	11/16	3/8	12 11/16	12 1/4	4 - 3/8
4	1 1/4-12	12	2 7/8	1 1/32	5	3/4	7/8	25/32	2 3/8	3/4	2 5/8	7/8	15/16	1/2	13 7/8	13 7/16	4 - 1/2
	1 1/2-12	12 3/8	3 3/16	1 5/16	5	3/4	1	25/32	2 3/8	27/32	2 7/8	7/8	15/16	1/2	14 5/8	14 3/16	4 - 1/2
5	1 1/4-12	12 1/8	2 15/16	1 1/32	7 1/4	3/4	7/8	13/16	2 3/8	3/4	2 5/8	1	7/8	1/2	13 15/16	13 1/2	6 - 1/2
	1 1/2-12	12 1/2	3 1/4	1 5/16	7 1/4	3/4	1	13/16	2 3/8	27/32	2 7/8	1	7/8	1/2	14 11/16	14 1/4	6 - 1/2
6	1 1/2-12	13 7/8	3 1/4	1 5/16	8 3/8	7/8	1	1	3 3/16	27/32	2 7/8	1 3/16	1 3/16	3/4	16 1/8	15 11/16	6 - 1/2
	1 3/4-12	14 1/16	3 7/16	1 5/16	8 3/8	7/8	1	1	3 3/16	15/16	3	1 3/16	1 3/16	3/4	16 5/8	15 13/16	6 - 1/2
8	1 3/4-12	14 7/8	3 1/2	1 5/16	11	1	1	1 1/4	3 1/2	15/16	3	1 7/16	1 5/16	1	17 1/2	16 5/8	6 - 5/8
FOR 2" AND 2 1/4" DIA. ROD CYLINDERS SEE MODEL EL ON PAGE 5																	
10	2-12	19	4 1/2	1 9/16	13	1 1/4	1 1/4	1 1/2	4 1/8	1 1/8	4	1 3/4	1 9/16	1 1/4	21 9/16	20 13/16	8 - 3/4
	2 1/4-12	19	4 1/2	1 9/16	13	1 1/4	1 1/4	1 1/2	4 1/8	1 3/16	4	1 3/4	1 9/16	1 1/4	21 5/8	20 7/8	8 - 3/4
12	2 1/2-12	23 1/4	5 1/2	2 1/32	16	1 1/2	1 1/2	2	5 1/4	1 7/16	5	2 1/4	1 11/16	1 1/2	26 1/8	25 5/8	8 - 7/8
	2 3/4-12	23 1/4	5 1/2	2 1/32	16	1 1/2	1 1/2	2	5 1/4	1 9/16	5	2 1/4	1 11/16	1 1/2	26 3/16	25 11/16	8 - 7/8
14	2 3/4-12	24 1/2	5 1/2	2 1/32	18 5/8	1 3/4	1 1/2	2 1/2	6 1/2	1 9/16	5	2 3/4	2 1/8	2	27 1/8	26 5/8	8 - 7/8
	3-12	24 1/2	5 1/2	2 1/32	18 5/8	1 3/4	1 1/2	2 1/2	6 1/2	1 3/4	5	2 3/4	2 1/8	2	27 1/4	26 3/4	8 - 7/8



# CLEVIS MOUNT MODEL EL (LONG EAR) [Larger Mounting Pins]



SEE PAGE 7 FOR ACCESSORIES

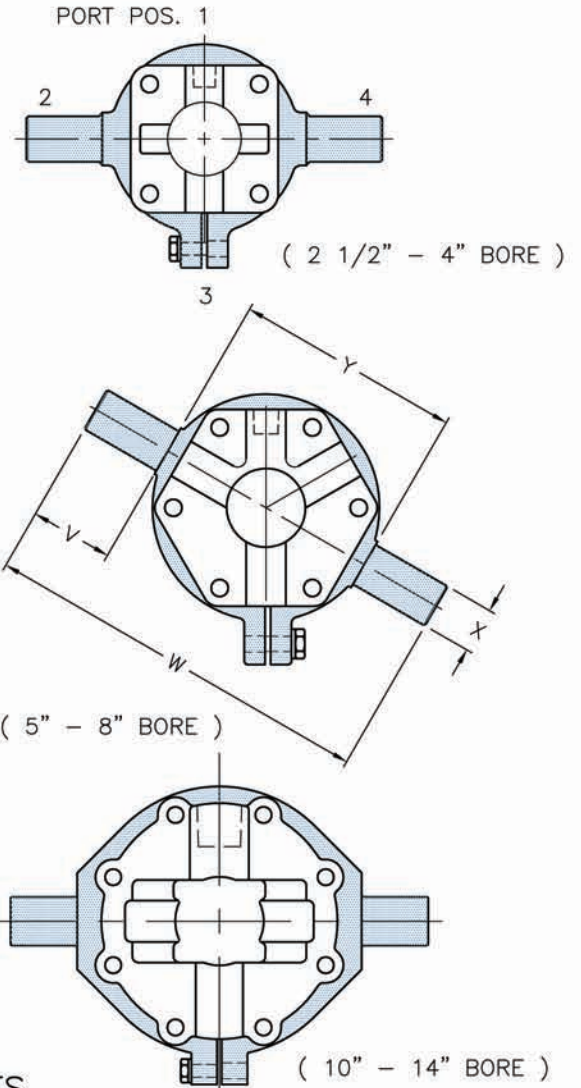
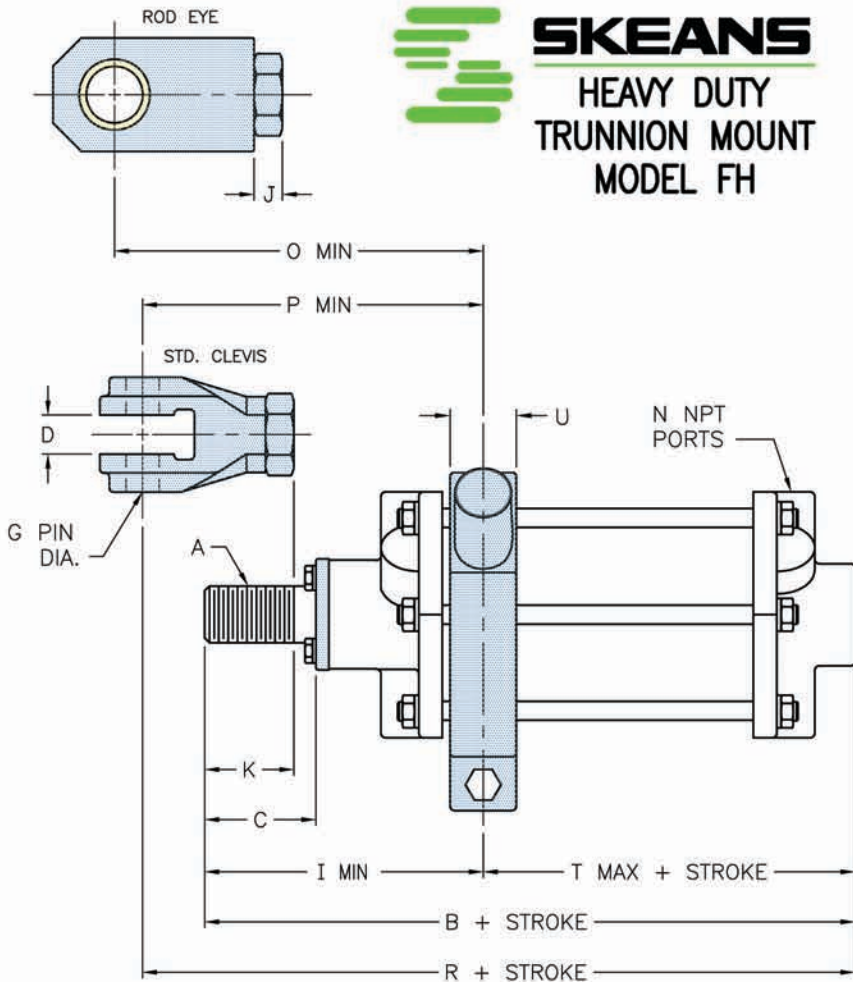
CYL. BORE	A*	B+	C	D	E	F	G	H	I	J	K	L	M	N	O+	R+	Y*
3	1-14	10 1/4	2 1/4	25/32	3 7/8	3/4	3/4	25/32	2 1/8	9/16	2	1 1/16	7/8	3/8	11 11/16	11 7/16	4 - 3/8
	1 1/4-12	11	3	1 1/32	3 7/8	3/4	7/8	25/32	2 1/8	3/4	2 5/8	1 1/16	7/8	3/8	12 7/8	12 3/8	4 - 3/8
4	1 1/4-12	12 7/16	2 7/8	1 1/32	5	1	7/8	1 1/32	2 11/16	3/4	2 5/8	1 1/2	1 1/4	1/2	14 3/16	13 3/4	4 - 1/2
	1 1/2-12	12 5/8	3 3/16	1 5/16	5	1	1	1 1/32	2 11/16	27/32	2 7/8	1 1/2	1 1/4	1/2	14 7/8	14 1/2	4 - 1/2
5	1 1/4-12	12 5/8	2 15/16	1 1/32	7 5/8	1	7/8	1 1/32	2 13/16	3/4	2 5/8	1 1/2	1 1/4	1/2	14 9/16	14	6 - 1/2
	1 1/2-12	12 7/8	3 1/4	1 5/16	7 5/8	1	1	1 1/32	2 13/16	27/32	2 7/8	1 1/2	1 1/4	1/2	15 1/8	14 5/8	6 - 1/2
6	1 1/2-12	14 1/2	3 1/4	1 5/16	8 1/2	1	1	1 1/32	3 3/16	27/32	2 7/8	1 3/4	1 3/8	3/4	16 7/8	16 7/16	6 - 1/2
	1 3/4-12	14 3/4	3 3/8	1 5/16	8 1/2	1	1	1 1/32	3 3/16	15/16	2 15/16	1 3/4	1 3/8	3/4	17 3/8	16 9/16	6 - 1/2
8	2-12	18 7/8	4 1/2	1 9/16	11 1/4	1 1/4	1 1/4	1 1/2	3 11/16	1 1/8	4	1 3/4	1 11/16	1	21 3/8	20 11/16	6 - 5/8
	2 1/4-12	18 7/8	4 1/2	1 9/16	11 1/4	1 1/4	1 1/4	1 1/2	3 11/16	1 3/16	4	1 3/4	1 11/16	1	21 7/16	20 3/4	6 - 5/8

A \* Dim. = Rod diameter and rod end thread ( Specify if other )  
 Y \* Dim. = Quantity and diameter ( Tie Rods )  
 B+, O+, R+, Dim. indicates cylinder stroke must be added



# SKEANS

## HEAVY DUTY TRUNNION MOUNT MODEL FH



SEE PAGE 7 FOR ACCESSORIES

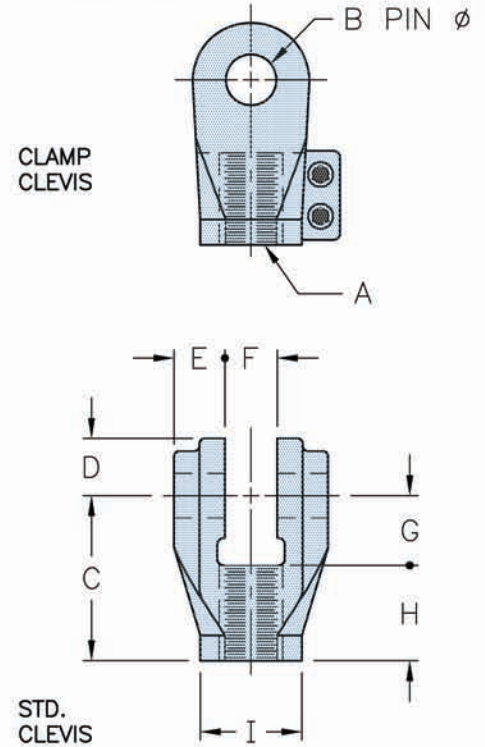
CYL BORE	A	B+	C	D	G	I	J	K	N	P	O	R+	T+	U	V	W	X	Y
2 1/2	1-14	8 3/4	2 7/16	25/32	3/4	5 3/4	9/16	2	3/8	7	7 1/4	10	3	1 1/4	1	5 3/4	3/4	3 3/4
3	1-14	9 1/4	2 1/4	25/32	3/4	6	9/16	2	3/8	7 3/16	7 3/8	10 7/16	3 1/4	1 3/8	2 1/4	8 3/4	1 1/4	4 1/4
	1 1/4-12	10	3	1 1/32	7/8	6 3/4	3/4	2 5/8	3/8	8 1/8	8 11/16	11 7/16	3 1/4	1 3/8	2 1/4	8 3/4	1 1/4	4 1/4
4	1 1/4-12	11	2 7/8	1 1/32	7/8	7 3/8	3/4	2 5/8	1/2	8 7/8	9 5/16	12 7/16	3 1 1/16	1 3/4	2 3/4	12 1/4	1 1/2	6 3/4
	1 1/2-12	11 3/8	3 3/16	1 5/16	1	7 3/4	27/32	2 7/8	1/2	9 9/16	10 1/16	13 3/16	3 5/8	1 3/4	2 3/4	12 1/4	1 1/2	6 3/4
5	1 1/4-12	11 3/16	2 15/16	1 1/32	7/8	7 3/8	3/4	2 5/8	1/2	8 13/16	9 1/4	12 9/16	3 13/16	1 3/4	2 3/4	13	1 1/2	7 1/2
	1 1/2-12	11 1/2	3 1/4	1 5/16	1	7 11/16	27/32	2 7/8	1/2	9 7/16	9 15/16	13 1/4	3 13/16	1 3/4	2 3/4	13	1 1/2	7 1/2
6	1 1/2-12	12 5/8	3 1/4	1 5/16	1	7 7/8	27/32	2 7/8	3/4	9 5/8	10 1/8	14 7/16	4 3/4	1 3/4	2 3/4	14 1/4	1 1/2	8 3/4
	1 3/4-12	12 3/4	3 3/8	1 5/16	1	8	15/16	3	3/4	9 3/4	10 5/8	14 1/2	4 3/4	1 3/4	2 3/4	14 1/4	1 1/2	8 3/4
8	1 3/4-12	13 3/8	3 1/2	1 5/16	1	8 7/8	15/16	3	1	10 5/8	11 7/16	15 1/8	4 1/2	2 1/4	2 3/4	17 1/4	2	11 3/4
	2-12	16 7/8	4 1/2	1 9/16	1 1/4	10 3/4	1 1/8	4	1	12 5/8	13 1/4	18 3/4	6 1/8	2 1/4	2 3/4	17 1/4	2	11 3/4
	2 1/4-12	16 7/8	4 1/2	1 9/16	1 1/4	10 3/4	1 3/16	4	1	12 5/8	13 3/8	18 3/4	6 1/8	2 1/4	2 3/4	17 1/4	2	11 3/4
10	2-12	17 1/16	4 1/2	1 9/16	1 1/4	10 7/8	1 1/8	4	1 1/4	12 1 1/16	13	18 7/8	6 1/2	2 1/2	2 3/4	19 1/2	2 1/4	14
	2 1/4-12	17 1/16	4 1/2	1 9/16	1 1/4	10 7/8	1 3/16	4	1 1/4	12 3/4	13 1/8	18 15/16	6 1/2	2 1/2	2 3/4	19 1/2	2 1/4	14
12	2 1/2-12	21 1/8	5 1/2	2 1/32	1 1/2	13 9/16	1 7/16	5	1 1/2	15 7/8	16	23 7/16	7 5/8	3 1/4	3 3/4	25	3	17 1/2
	2 3/4-12	21 1/8	5 1/2	2 1/32	1 1/2	13 9/16	1 9/16	5	1 1/2	16	16 5/16	23 9/16	7 5/8	3 1/4	3 3/4	25	3	17 1/2
14	2 3/4-12	21 15/16	5 1/2	2 1/32	1 1/2	13 9/16	1 9/16	5	2	16	16 1/2	24 3/8	8 3/8	3 1/2	3 3/4	27 1/4	3 1/4	19 3/4
	3-12	21 15/16	5 1/2	2 1/32	1 1/2	13 9/16	1 3/4	5	2	16 1/8	16 5/8	24 1/2	8 3/8	3 1/2	3 3/4	27 1/4	3 1/4	19 3/4



# SKEANS SG SERIES HEAVY DUTY AIR CYLINDER ACCESSORIES

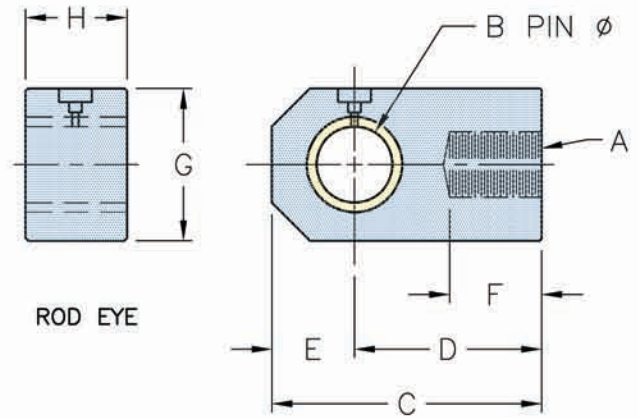
## STANDARD AND CLAMP STYLE ROD CLEVIS

STD. CLEVIS PART NO.	CLAMP CLEVIS PART NO.	A THREAD	BØ	C	D	E	F	G	H	I
NB022	NB259	5/8-18	1/2	1 5/8	9/16	3/8	17/32	3/4	7/8	1 1/16
NB059	NB260	3/4-16	1/2	2	5/8	7/16	17/32	1	1	1 3/8
NB093	NB261	1-14	3/4	2 5/8	3/4	13/16	25/32	1 1/8	1 1/2	1 13/16
NB114	NB262	1 1/4-12	7/8	3 1/4	1 1/8	1	1 1/32	1 3/8	1 7/8	2
NB120	NB263	1 1/2-12	1	3 13/16	1 1/4	1	1 5/16	1 13/16	2	2 7/8
NB139	NB264	1 3/4-12	1	3 13/16	1 1/4	1	1 5/16	1 13/16	2	2 7/8
NB174	NB265	2-12	1 1/4	4 11/16	1 9/16	1 1/4	1 9/16	1 11/16	3	3 7/16
NB186	NB266	2 1/4-12	1 1/4	4 11/16	1 9/16	1 1/4	1 9/16	1 11/16	3	3 7/16
NB200	N/A	2 1/2-12	1 1/2	5 7/8	1 3/4	1 5/8	2 1/32	2 3/16	3 11/16	3 5/8
NB207	N/A	2 3/4-12	1 1/2	5 7/8	1 3/4	1 5/8	2 1/32	2 3/16	3 11/16	3 5/8



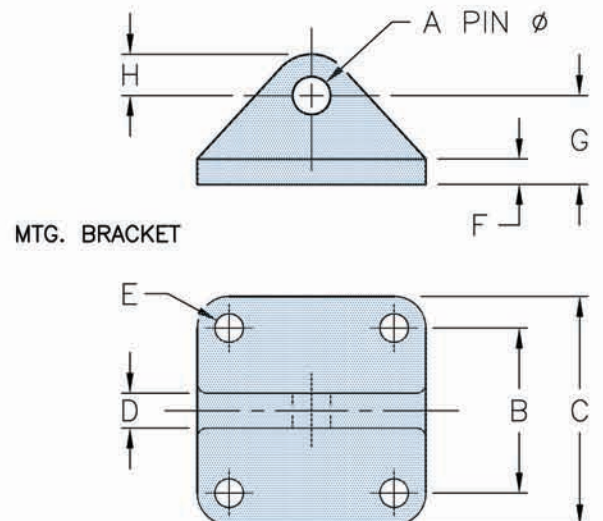
## HEAVY DUTY STEEL ROD EYE

PART NO.	A THREAD	BØ	C	D	E	F	G	H
NB270	3/4-16	1	4	2 7/8	1 1/8	1 1/2	2 1/4	1 3/4
NB271	1-14	1	4	2 7/8	1 1/8	1 1/2	2 1/4	1 3/4
NB272	1 1/4-12	1 1/2	5 5/16	3 11/16	1 5/8	2	3	2
NB274	1 1/2-12	1 1/2	6	4 1/4	1 3/4	2 1/4	3 1/2	2 1/4
NB275	1 3/4-12	2	6 7/8	4 5/8	2 1/4	2 1/4	4 1/2	2 3/4
NB276	2-12	2	7 5/8	5 3/8	2 1/4	3	4 1/2	3 1/2
NB277	2 1/4-12	2	7 5/8	5 3/8	2 1/4	3	4 1/2	3 1/2
NB278	2 1/2-12	2 1/2	9 1/8	6 3/8	2 3/4	3 3/4	5 1/2	4
NB279	2 3/4-12	2 1/2	9 1/8	6 3/8	2 3/4	3 3/4	5 1/2	4
NB280	3-12	2 1/2	9 1/8	6 3/8	2 3/4	3 3/4	5 1/2	4



## MOUNTING BRACKET

PART NO.	A PIN Ø	Bsq.	Csq.	D	E	F	G	H
NB010	3/8	1 3/4	2 3/4	7/16	13/32	3/8	1 3/16	1/2
NB060	1/2	2	3 1/4	7/16	9/16	1/2	1 3/8	5/8
NB095	3/4	3 1/4	4 1/2	11/16	9/16	1/2	1 3/4	13/16
NB116	7/8	4 1/4	5 1/2	15/16	9/16	5/8	2	1
NB141	1	5	7	1	21/32	3/4	2 1/2	1 1/4
NB176	1 1/4	6	8	1 1/4	25/32	1	3	1 1/2
NB202	1 1/2	6 3/4	10	1 13/16	1 1/16	1 1/4	3 1/2	2
NB218	1 3/4	8	10 1/2	2 1/4	1 5/16	1 1/2	3 3/4	2 3/16



# SKEANS

pneumatic automation systems



Vancouver Corporate Office, Machine Shop and Warehouse

## **Vancouver (Corporate Office)**

1900 Brigantine Drive  
Coquitlam, BC V3K 7B5  
Phone: 604-777-4247  
Fax: 604-777-1900  
skeans@skeans.com

## **Edmonton**

8864 - 48th Avenue  
Edmonton, AB T6E 5L1  
Phone: 780-463-8400  
Fax: 780-463- 9156  
seal@skeans.com

## **Kamloops (Service Center ONLY)**

971 G Laval Cres.  
Kamloops, BC V2C 5P4  
Service Cell: 250-574-9511  
Sales Cell: 250-819-3067  
skeans@skeans.com

## **Calgary**

#3 - 4063 - 74th Ave. S.E.  
Calgary, AB T2C 2H9  
Phone: 403-279-6644  
Fax: 403-279-6844  
secal@skeans.com

## **Prince George**

#1 - 2224 Queensway Street  
Prince George, BC V2L 5R5  
Phone: 250-564-2201  
Fax: 250-564-2202  
sepg@skeans.com

## **Winnipeg**

#5 - 2130 Notre Dame Ave  
Winnipeg, MB R3H 0K1  
Phone: 204-633-9699  
Fax: 204-633-9799  
sewin@skeans.com

Please visit our website to view the other actuators we have available.

We repair ALL cylinders, ANY make, ANY size!

CAD services available upon request.

[www.skeans.com](http://www.skeans.com)

